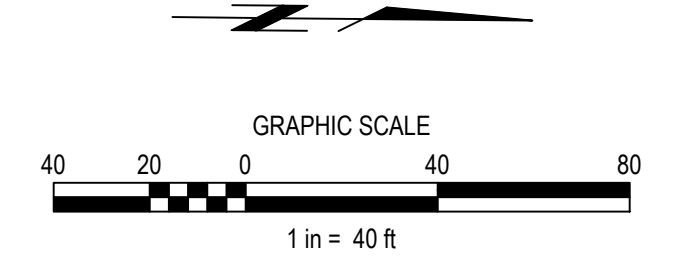


DC EXHIBIT G

GRADING LEGEND

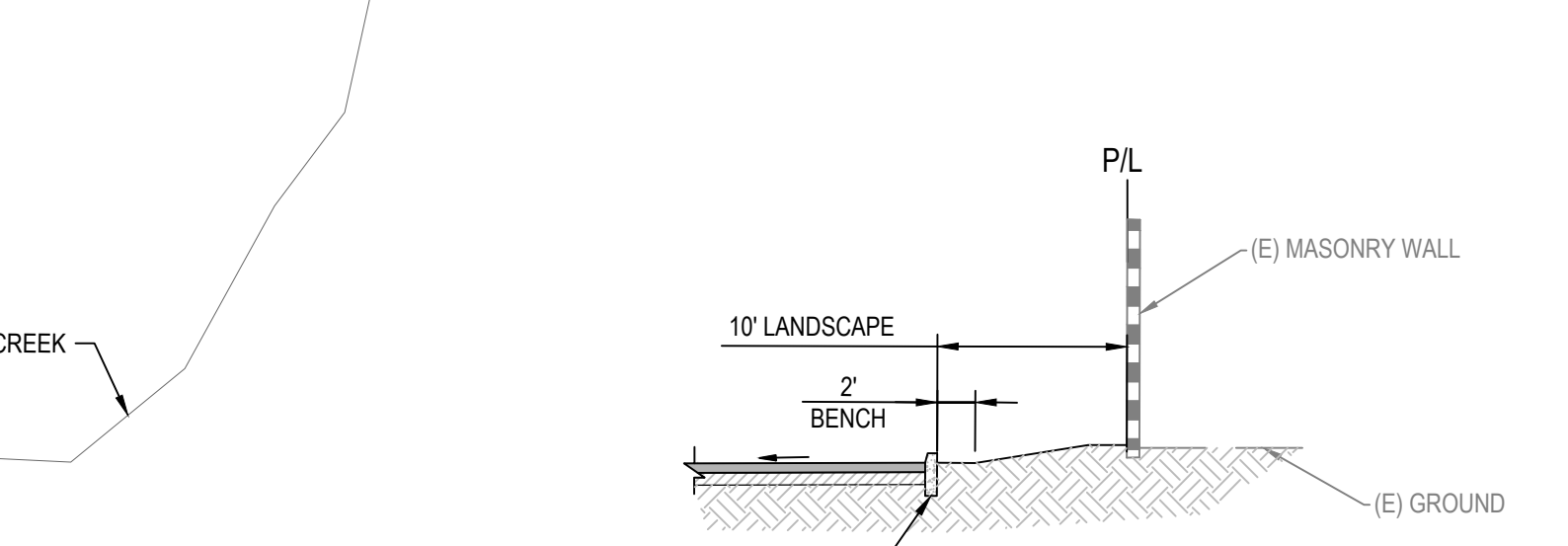
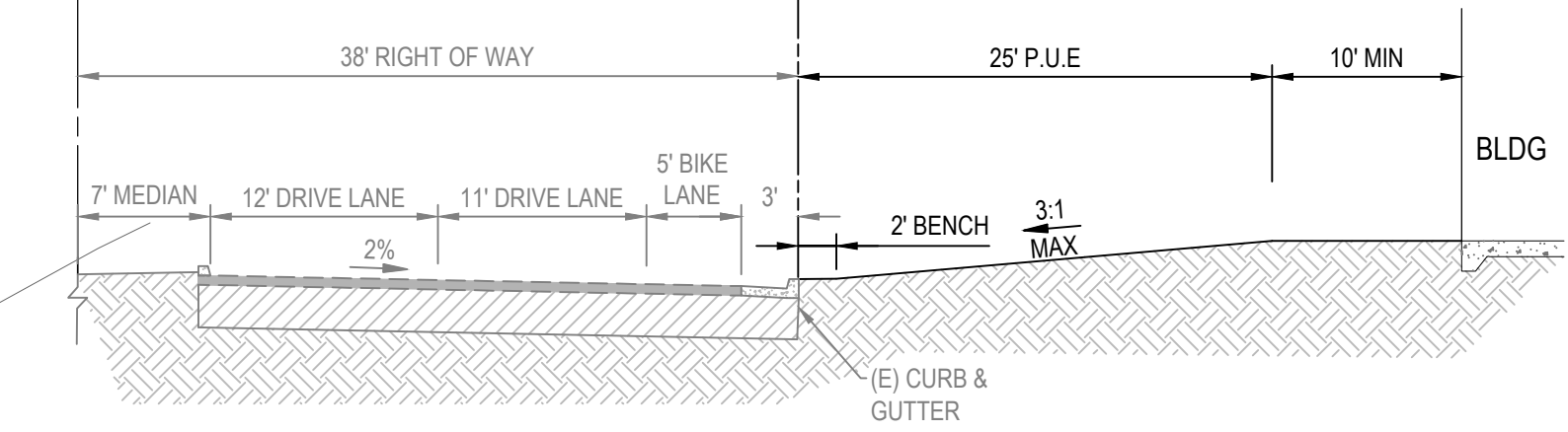
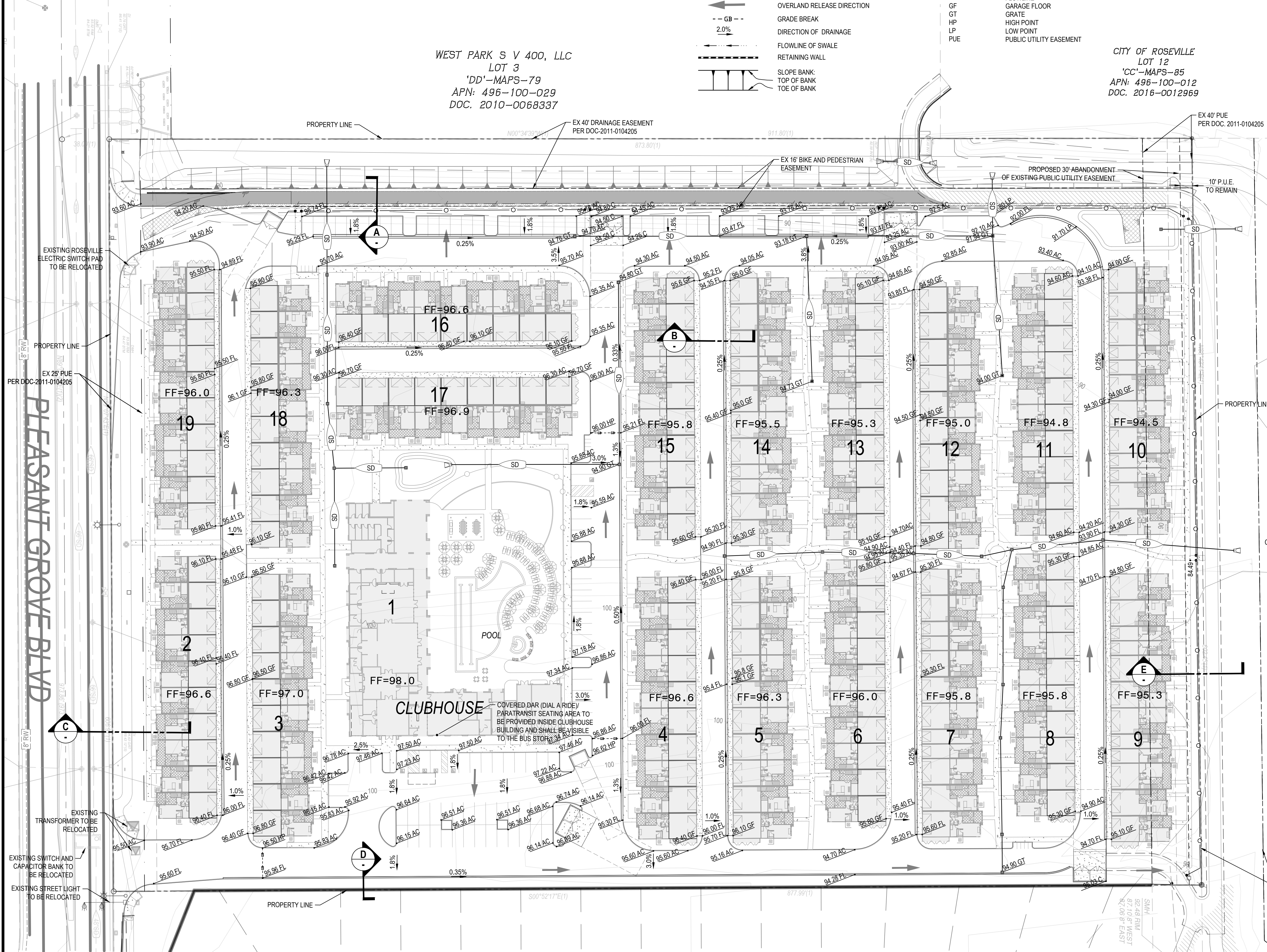
SYMBOLS:	EXISTING	PROPOSED	DESCRIPTION	ABBREVIATIONS
			STORM DRAIN MANHOLE	AC ASPHALTIC CONCRETE
			STORM DRAIN INLET	C CONCRETE
			STORM DRAIN PIPE	E, EX EXISTING
			OVERLAND RELEASE DIRECTION	FF FINISH FLOOR
			GRADE BREAK	FL FLOWLINE
			DIRECTION OF DRAINAGE	GF GARAGE FLOOR
			FLOWLINE OF SWALE	GT GRATE
			RETAINING WALL	HP HIGH POINT
			SLOPE BANK: TOP OF BANK TOE OF BANK	LP LOW POINT
				PUE PUBLIC UTILITY EASEMENT

EARTHWORK VOLUMES	
CUT	39,200 CU. YDS.
FILL	29,400 CU. YDS.
NET EXPORT	9,800 CU. YDS.



WEST PARK S V 400, LLC
LOT 3
'DD'-MAPS-79
APN: 496-100-029
DOC. 2010-0068337

CITY OF ROSEVILLE
LOT 12
'CC'-MAPS-85
APN: 496-100-012
DOC. 2016-0012969



NO.	DESCRIPTION	APPD. ENGR.	DATE	APPD. E.U.	DATE

SCALE:	BENCH MARK CITY OF ROSEVILLE B.M. 128 3-1/4" BRASS DISK STAMPED 2018 PLS 8278, LOCATED ON THE NORTHEAST ANGLE POINT OF THE CONSPAN ON THE EAST SIDE OF WESTBROOK BLVD. BEING APPROX. 2000 FEET NORTH OF THE INTERSECTION WITH PLEASANT GROVE BLVD.	COMPUTED EL=96.120 (NGVD 88)
HORIZ. 1" = 40'		DESIGNED DLF
VERT. 1" = N/A		DRAWN SH
		PROJ. ENGR. GB

MORTON & PITALO, INC.
CIVIL ENGINEERING • LAND PLANNING • LAND SURVEYING
Folsom • Fresno
600 Coolidge Drive, Suite #140
Folsom, CA 95630
phone: (916) 984-7621
web: www.mpengr.com

PRELIMINARY GRADING PLAN FOR
WESTPARK W-16
APN 496-010-001-000
ROSEVILLE, CALIFORNIA

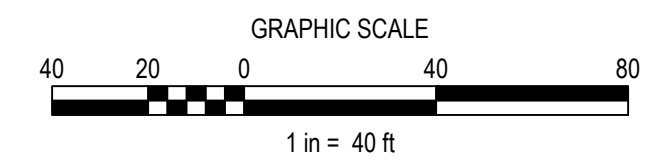
DATE: JUNE 1, 2022
SHEET: C1
OF: 2

NOT FOR CONSTRUCTION

Dwg: X:\2017\17-0037-001-001\WESTPARK W-16\DC EXHIBIT G.dwg | Sheet: 02 of 02 | 2:56pm | SHEET: G

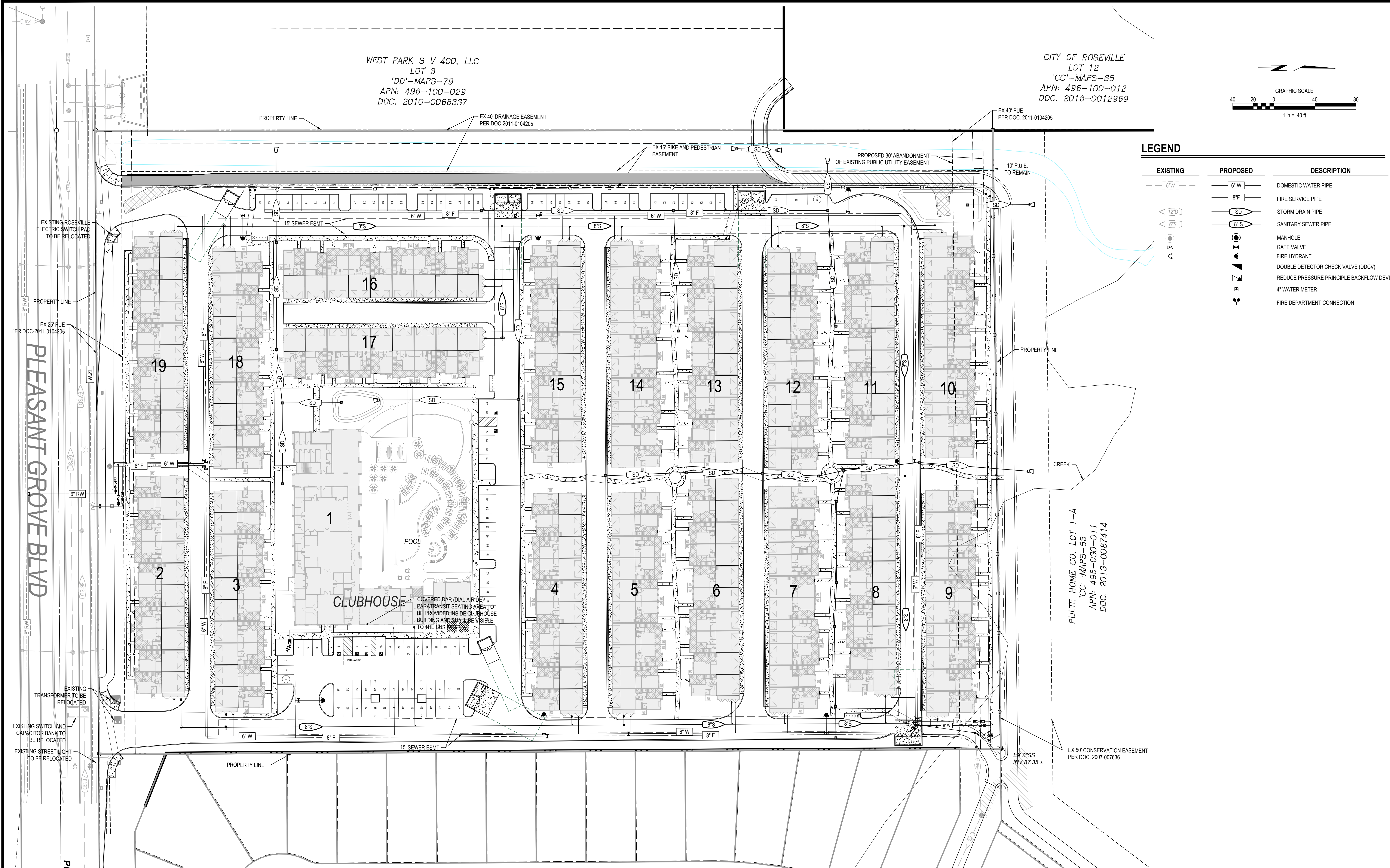
WEST PARK S V 400, LLC
 LOT 3
 'DD'-MAPS-79
 APN: 496-100-029
 DOC. 2010-0068337

CITY OF ROSEVILLE
 LOT 12
 'CC'-MAPS-85
 APN: 496-100-012
 DOC. 2016-0012969



LEGEND

EXISTING	PROPOSED	DESCRIPTION
		DOMESTIC WATER PIPE
		FIRE SERVICE PIPE
		STORM DRAIN PIPE
		SANITARY SEWER PIPE
		MANHOLE
		GATE VALVE
		FIRE HYDRANT
		DOUBLE DETECTOR CHECK VALVE (DDCV)
		REDUCE PRESSURE PRINCIPLE BACKFLOW DEVICE
		4" WATER METER
		FIRE DEPARTMENT CONNECTION



PLEASANT GROVE BLVD

PULTE HOME CO. LOT 1-A
 'CC'-MAPS-53
 APN: 496-030-011
 DOC. 2013-0087414

NOT FOR CONSTRUCTION

DWG: X:\2017\17-0037-01\WESTPARK W-16\WESTPARK W-16\DWG\17-0037-01-UTL1.DWG | 1 Sheet | 06/01/2022 09:08am | RCH/ENG

NO.	DESCRIPTION	APPD. ENGR.	DATE	APPD. E.U.	DATE

SCALE:
 HORIZ. 1" = 40'
 VERT. 1" = N/A

BENCH MARK
 CITY OF ROSEVILLE B.M. 128
 EL=96.120 (NGVD 88)

3-1/4" BRASS DISK STAMPED 2018 PLS 8278, LOCATED ON THE NORTHEAST ANGLE POINT OF THE CONSPAN ON THE EAST SIDE OF WESTBROOK BLVD. BEING APPROX. 2000 FEET NORTH OF THE INTERSECTION WITH PLEASANT GROVE BLVD.

COMPUTED	
DESIGNED	DLF
DRAWN	SH
PROJ. ENGR.	GB

mp **MORTON & PITALO, INC.**
 CIVIL ENGINEERING • LAND PLANNING • LAND SURVEYING
 Folsom • Fresno
 600 Coolidge Drive, Suite #140
 Folsom, CA 95630
 phone: (916) 984-7621
 web: www.mpengr.com

PRELIMINARY UTILITY PLAN FOR
WESTPARK W-16
 APN 496-010-001-000
 ROSEVILLE, CALIFORNIA

DATE	JUNE 1, 2022
SHEET	C2
OF	2